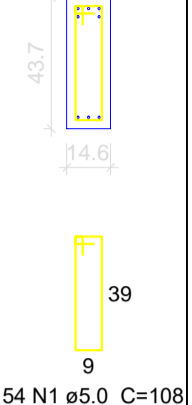


SEÇÃO A-A  
ESC 1:25



Relação do aço

Relação do aço

ACO	N	DIAM (mm)	QUANT (Barras)	UNIT (cm)	C.TOTAL (cm)
CA60	1	5.0	2	245	490
	2	5.0	2	185	370
	3	5.0	154	108	16632
CA50	4	8.0	2	1068	2136
	5	8.0	2	1025	2050
	6	8.0	2	1164	2328
	7	8.0	2	637	1274
	8	8.0	1	175	175
	9	8.0	4	1200	4800
	10	8.0	2	579	1158
	11	8.0	1	165	165
	12	8.0	2	367	734
	13	10.0	2	320	640

Resumo do aço

ACO	DIAM (mm)	C.TOTAL (m)	PESO + 10 % (kg)
CA50	8.0	148.2	64.3
CA60	10.0	6.4	4.3
CA60	5.0	175	29.7
PESO TOTAL (kg)			
CA50			68.7
CA60			29.7

Volume de concreto (C-25) = 2.66 m³  
Área de forma = 41.37 m²

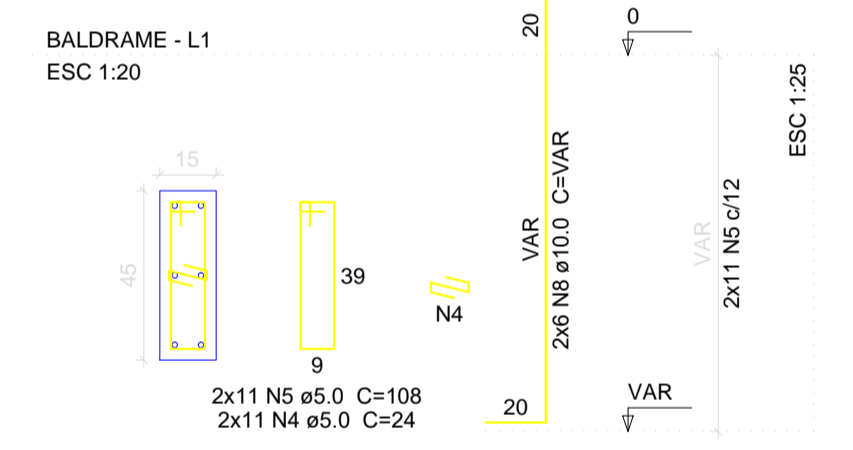
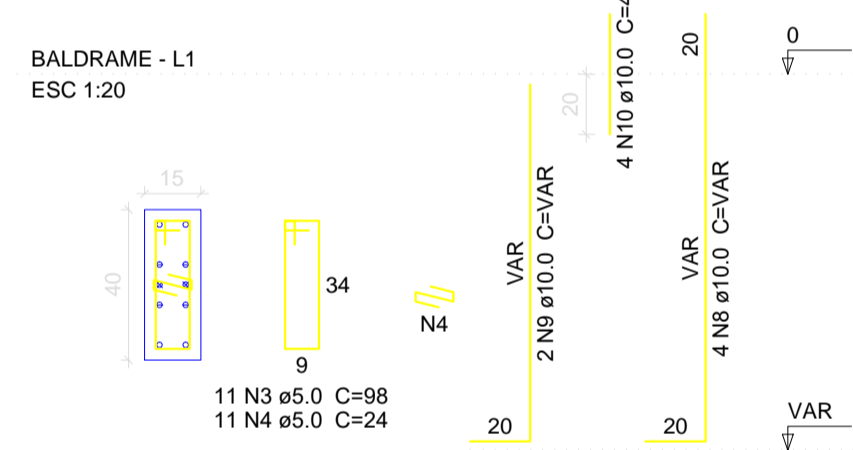
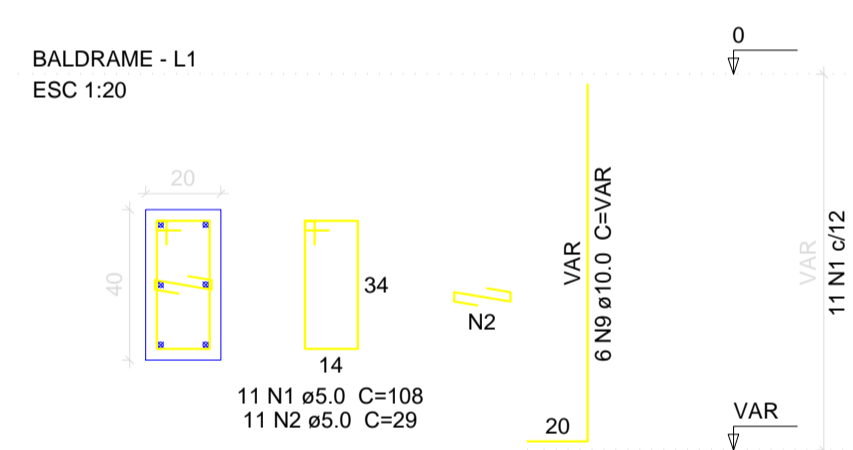
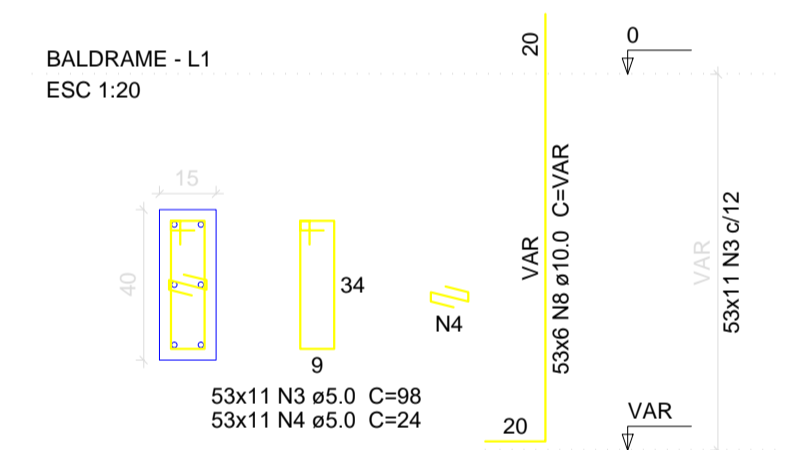
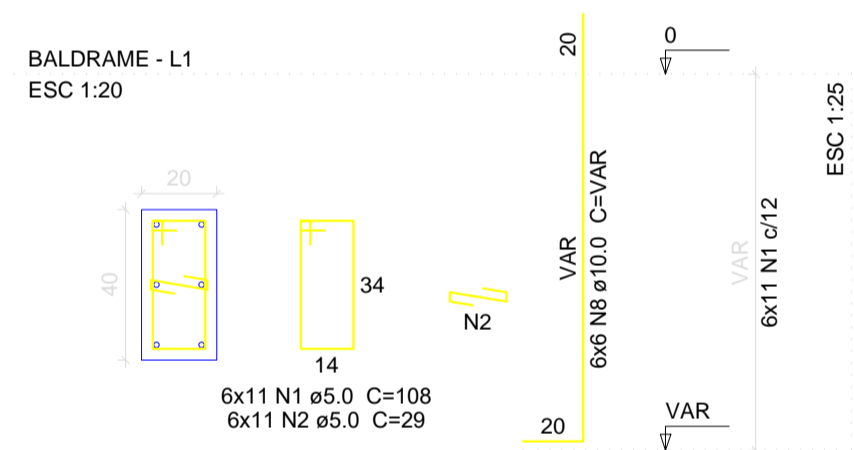
P1=P2=P6=P7=P8=P9=P13=P15=P19=P21=P23  
=P29=P32=P36=P37=P40=P42=P45=P50=P51  
=P52=P53=P67=P68=P69=P74=P75=P76=P84  
=P86=P88=P89=P90=P91=P93=P94=P95=P96  
=P97=P98=P99=P102=P103=P104=P105=P106  
=P107=P108=P109=P110=P112=P113=P115

P54=P55=P62=P78=P92=P100

P116

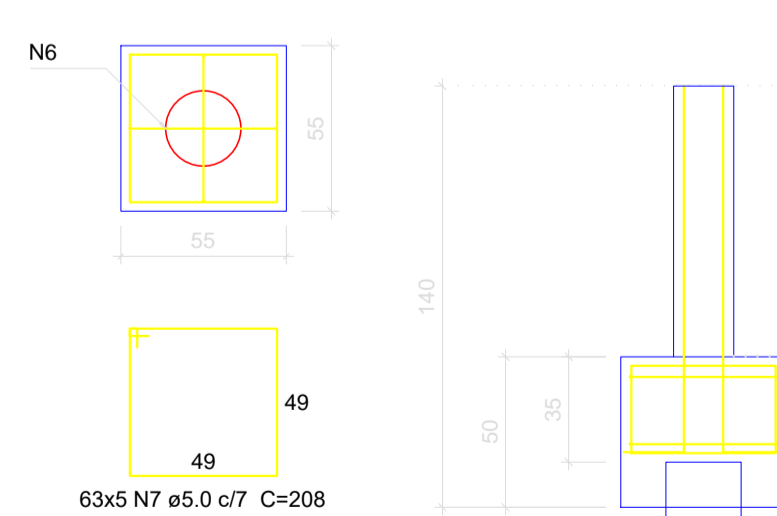
P60

P22=P83

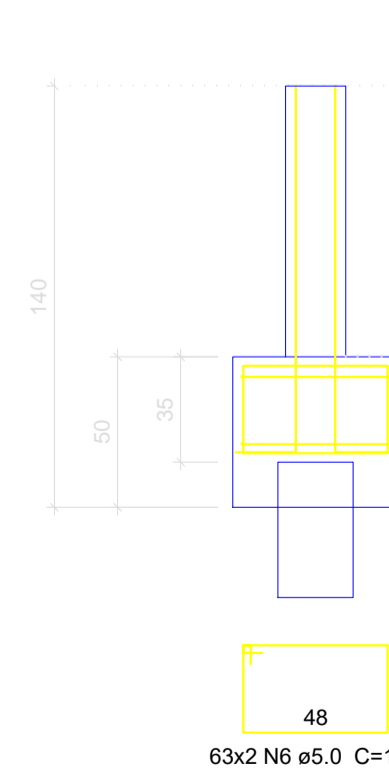


B1=B2=B6=B7=B8=B9=B13=B15=B19=B21=B22  
=B23=B29=B32=B36=B37=B40=B42=B45=B50  
=B51=B52=B53=B54=B55=B60=B62=B67=B68  
=B69=B74=B75=B76=B78=B83=B84=B86=B88  
=B89=B90=B91=B92=B93=B94=B95=B96=B97  
=B98=B99=B100=B102=B103=B104=B105=B106  
=B107=B108=B109=B110=B112=B113=B115=B116  
1xC25

PLANTA ESC 1:25



CORTE ESC 1:25



Relação do aço

ACO	N	DIAM (mm)	QUANT (Barras)	UNIT (cm)	C.TOTAL (cm)
CA60	1	5.0	77	108	8316
	2	5.0	77	29	2233
	3	5.0	594	98	58212
	4	5.0	616	24	14784
	5	5.0	22	108	2376
	6	5.0	126	166	20916
	7	5.0	315	208	65520
CA50	8	10.0	370	VAR	VAR
	9	10.0	8	VAR	VAR
	10	10.0	4	40	160

Resumo do aço

ACO	DIAM (mm)	C.TOTAL (m)	PESO + 10 % (kg)
CA50	10.0	604.6	410
CA60	5.0	1723.6	292.2
PESO TOTAL -90 (kg)			
CA50			410
CA60			292.2

Volume de concreto (C-25) = 13.98 m³  
Área de forma = 157.05 m²  
CA : -125



PROJETO DE ENGENHARIA

PRANCHA  
14/14

OBJETO: Projeto Estrutural Hospital Municipal

END: Rua 16 nº 1.063 - Bairro Nacib Jabur Maluf  
- Itapagipe/MG

PROP: Município de Itapagipe-MG

CPF/CNPJ: 21.226.840/0001-47

Quadro de assinaturas:	
Proprietário CPF/CNPJ	Benice Nery Maia Prefeita Municipal
Resp. Técnico CPF/CNPJ	Secretaria Municipal de Obras Rodolfo Costa Agreli CREA-SP-5070412203-LP

Aprovação:

--	--	--	--